

Shared Space within a Beloved Place

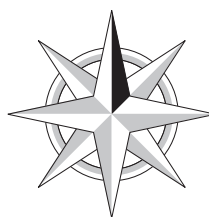
Missing Middle Housing is filling in the gaps of our cities - socially, environmentally, economically. Our courtyard housing design becomes a microcosm of *community*. An alternative housing pattern that encourages the revival of a commercial corridor into a vibrant meeting place while fostering pride of place within its quieter depths.

An eastward facing courtyard and community room become the focal point onto which 9 units engage in shared living. Nooks, gardens, and patios support a culture of sustainability and retreat at the interior of the parcel. A patio is carved out along the street to support a sunny public space that activates the sidewalk and retail space. High-design and efficient living spaces give a choice of housing types in high demand.

The character evokes local, Michigan roots - combining the best aspects of urbanism in a mid-size city by utilizing timeless materials, a simple and affordable structure, and a balance of scales that transition from an urban to residential environment in both building detail and open space.

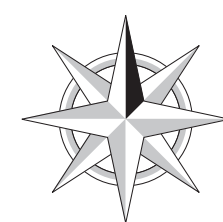
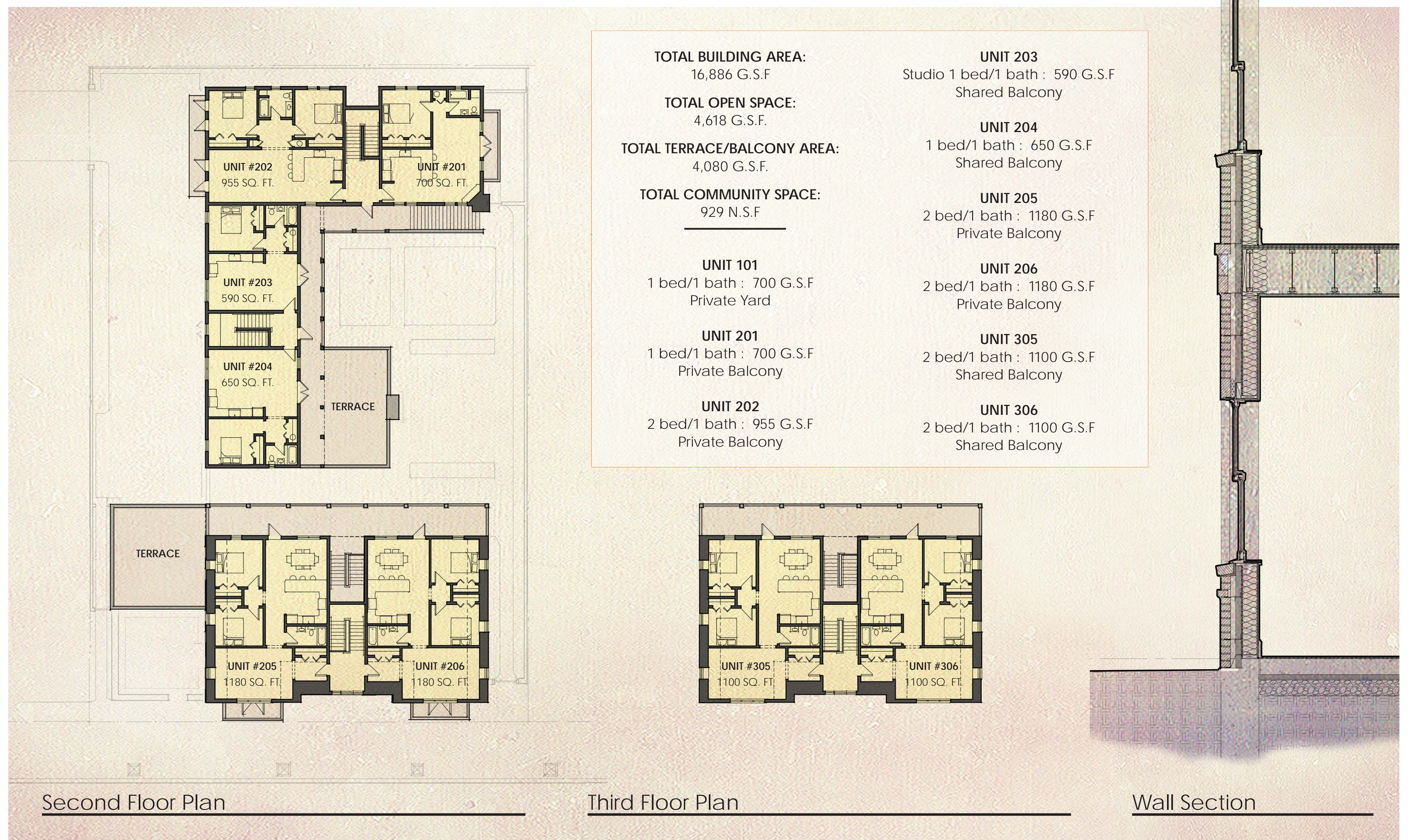
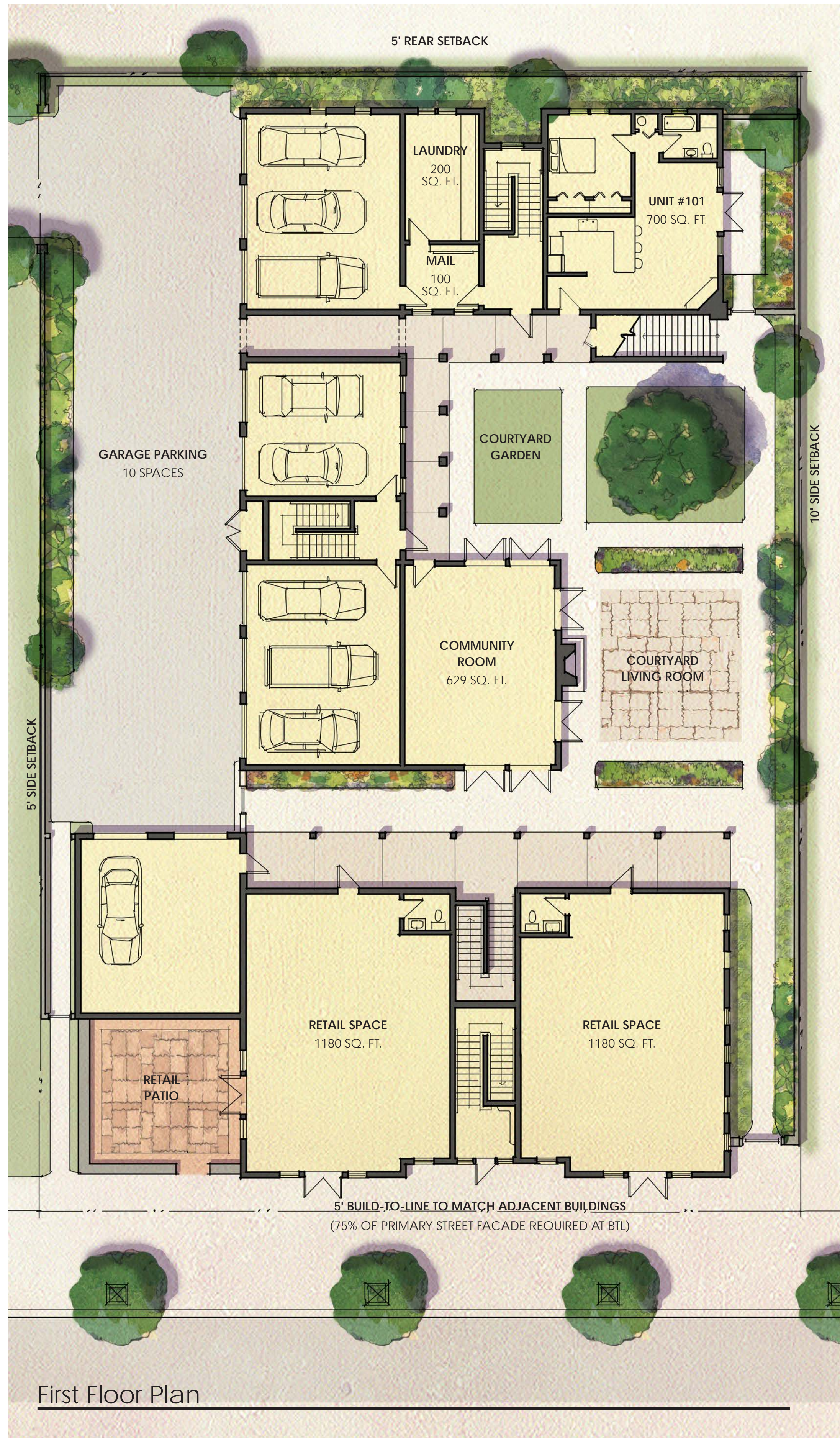


Block Location Map



The Courtyard

MIplace Missing Middle Housing
Site Option A



The Courtyard

Mplace Missing Middle Housing
Site Option A



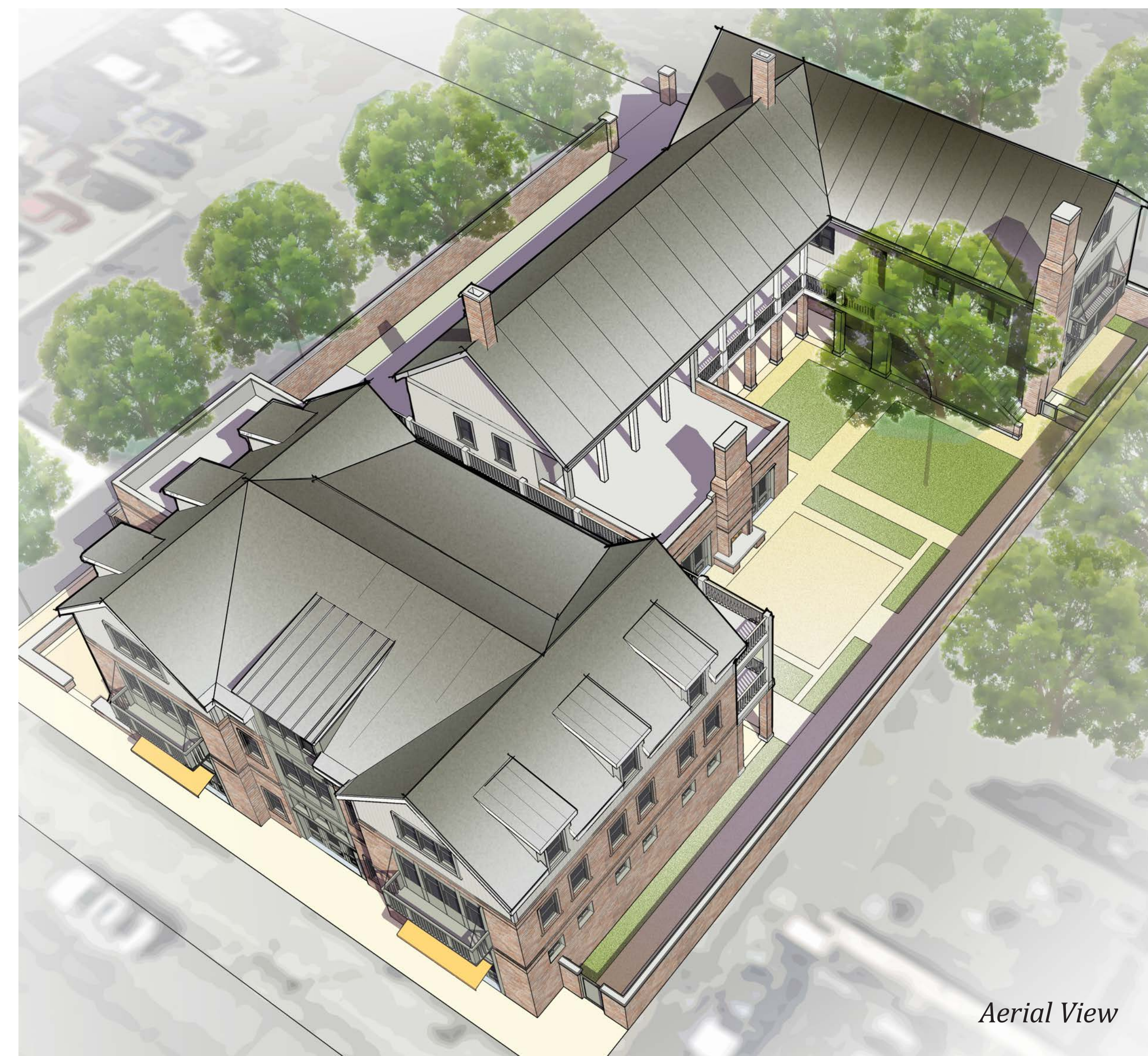
Section through Courtyard looking North



West Garage Elevation



Courtyard Entrance Perspective



Aerial View

The Courtyard

Mlplace Missing Middle Housing
Site Option A